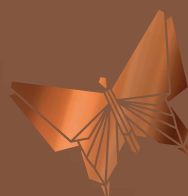




THE FLOOR PLANS



PARK & SAYER
LONDON

LIVE MEET WORK
EAT RELAX PLAY

PARK & SAYER IS AT THE HEART OF THE EVOLVING AND REVITALISED ELEPHANT & CASTLE. AT THE HEART OF AN ENERGISED COMMUNITY OF PARKS AND RESTAURANTS, GALLERIES AND MARKETS, SHOPS AND CAFÉS; AT THE HEART OF LONDON, BRILLIANTLY CONNECTED TO THE WEST END, THE CITY AND TO CANARY WHARF. ONLY A SHORT WALK TO THE CONTEMPORARY CULTURAL CORE OF THE SOUTHBANK AND THE TATE MODERN:

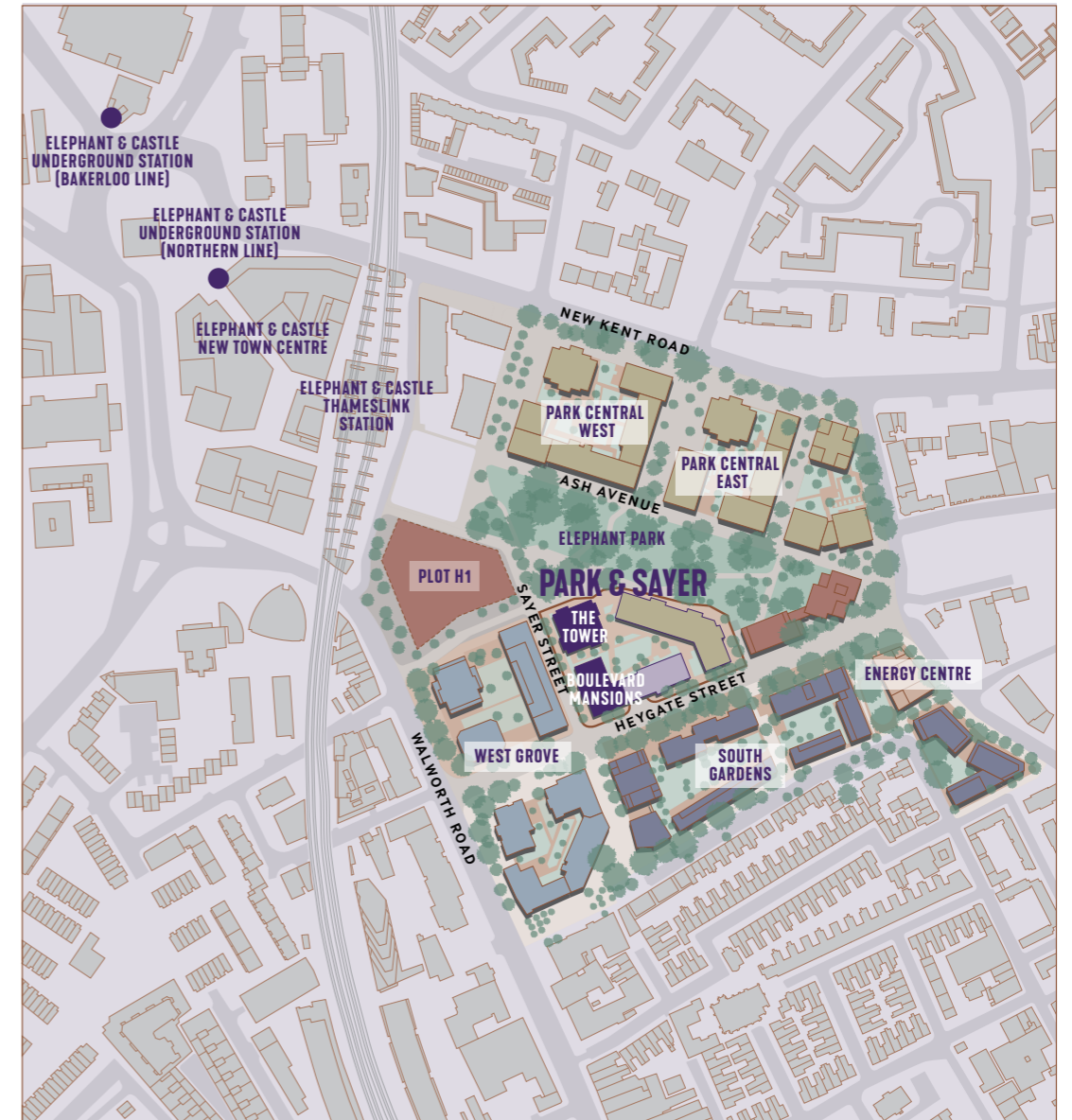
**PARK & SAYER HAS LIFE,
IT HAS HEART, IT HAS SOUL.**





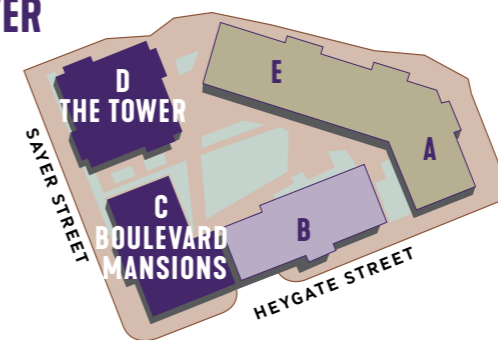
▲ A COMPUTER GENERATED IMAGE OF PARK & SAYER AND ITS NEIGHBOURS WITH THE SHARD AND CITY OF LONDON BEYOND.

THE ELEPHANT PARK MASTERPLAN

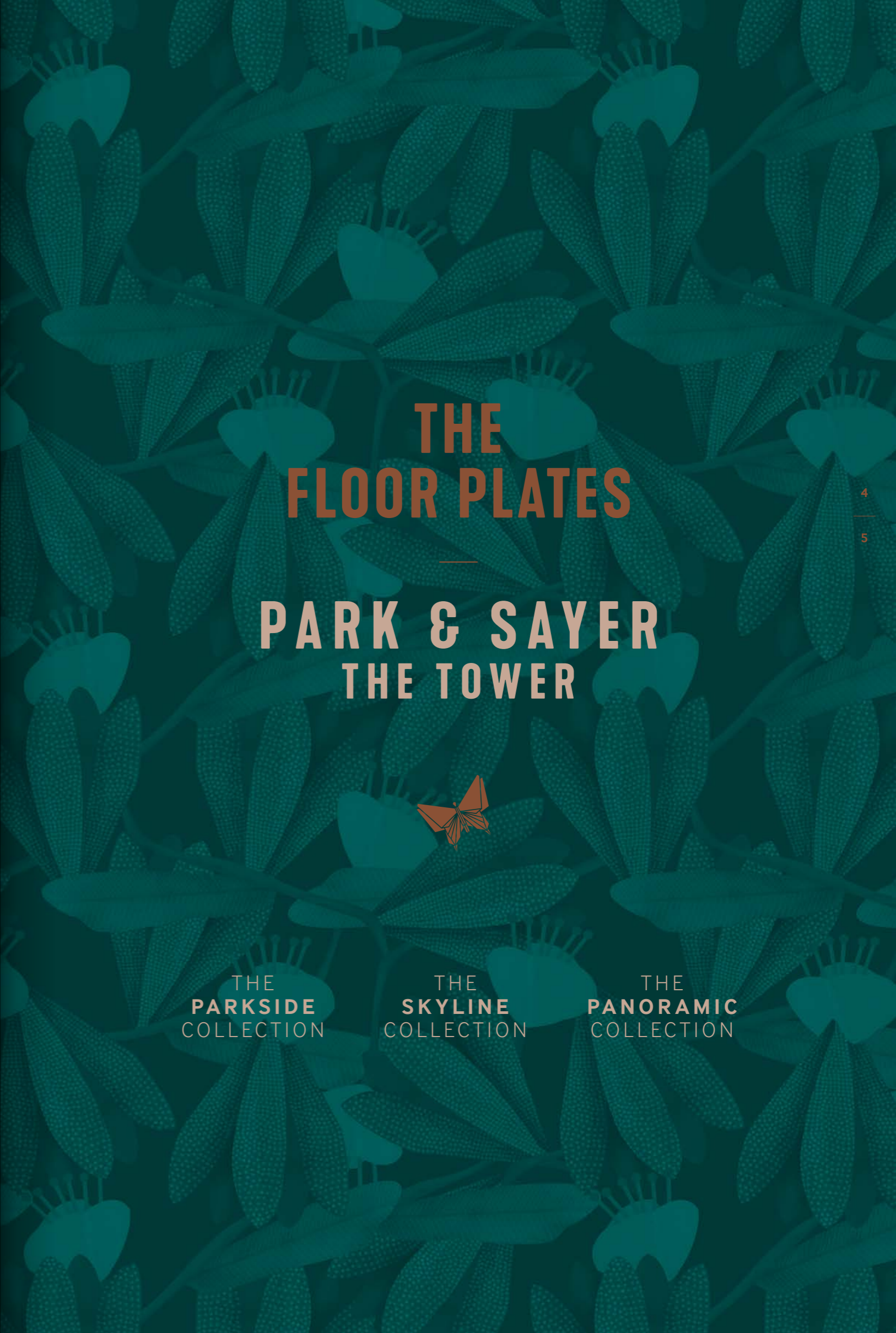


- Park & Sayer
- Living by Lendlease
- Future Phases
- PLOT H1**
A commercial-led building currently in design development

PARK & SAYER



- D** Park & Sayer, The Tower
- C** Boulevard Mansions and Shared Ownership
- B** Shared Ownership and Affordable Rent
- EGA** Living by Lendlease



THE FLOOR PLATES

PARK & SAYER THE TOWER



THE
PARKSIDE
COLLECTION

THE
SKYLINE
COLLECTION

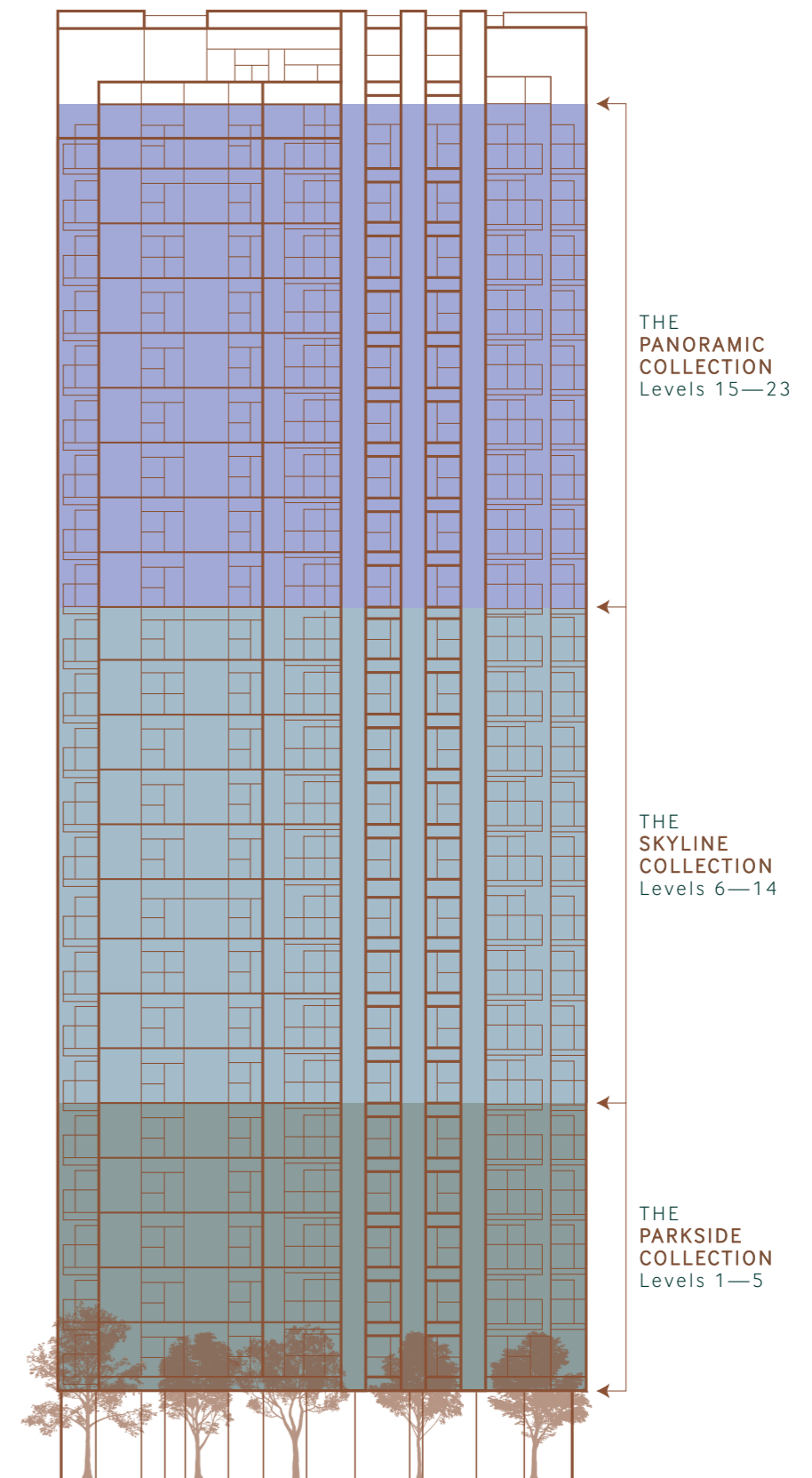
THE
PANORAMIC
COLLECTION

4
5

THE
TOWER

THE APARTMENT COLLECTIONS

THOSE CHOOSING TO LIVE AT
PARK & SAYER BENEFIT FROM ITS
ATTRACTIVE PARKSIDE SETTING,
THE RESIDENT'S ELEVATED GARDEN
AND THE SIMPLY SPECTACULAR
VIEWS ACROSS LONDON. EACH OF
THE APARTMENT COLLECTIONS
HAVE BEEN CAREFULLY
CURATED TO OPTIMISE THESE
PARTICULAR ATTRIBUTES.

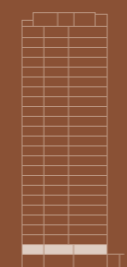


THE PARKSIDE COLLECTION FIRST FLOOR

THE PARKSIDE COLLECTION



ELEVATION

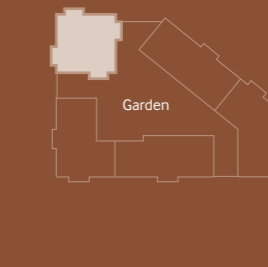


The Parkside Collection Floor 1

ELEPHANT PARK



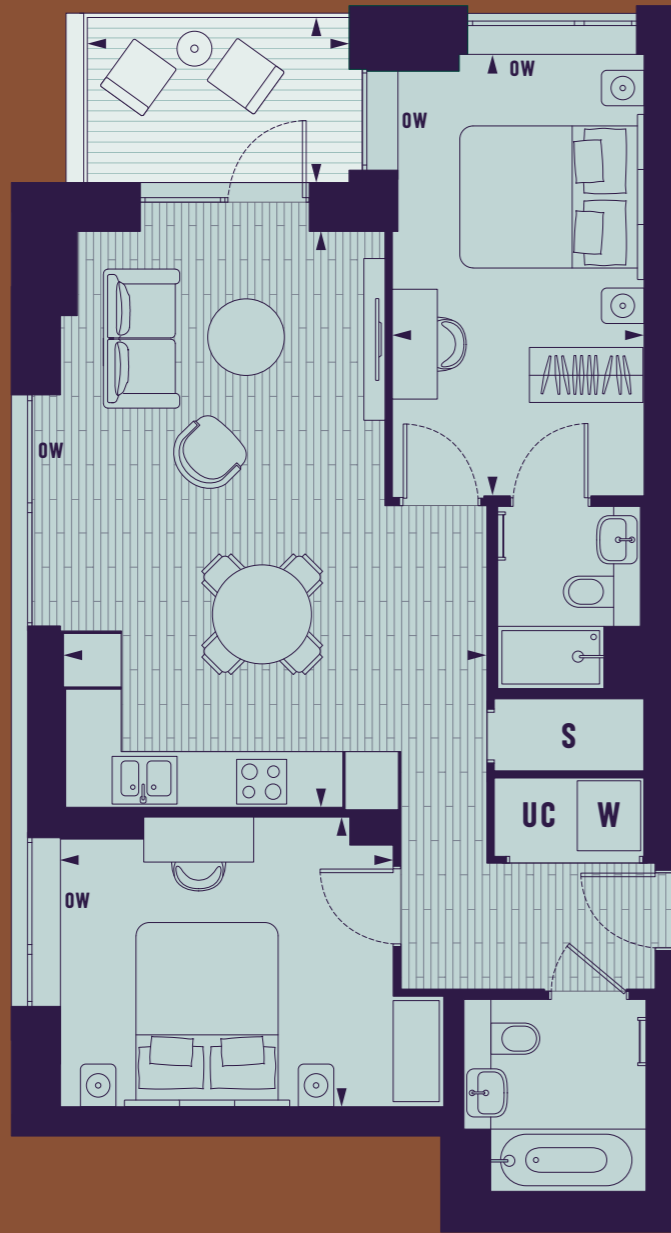
PARK & SAYER



NUMBER OF BEDROOMS

1 BEDROOM	
2 BEDROOM	
STORAGE	S
WASHING MACHINE	W
UTILITIES	UC

THE PARKSIDE COLLECTION



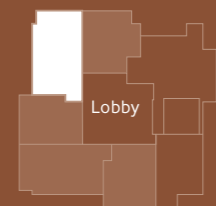
2
BED APARTMENT
D.01.01



ELEVATION



FLOOR PLATE



APARTMENT DIMENSIONS

Living Room/Kitchen:	4.8m x 6.5m	15' 10" x 21' 4"
Principal Bedroom:	2.8m x 5.0m	9' 3" x 16' 4"
Bedroom 2:	3.3m x 3.8m	10' 9" x 12' 4"
Total Internal Area:	75.2 sq. m	809 sq. ft
Balcony:	2.8m x 1.8m	9'4" x 6'

THE PARKSIDE COLLECTION



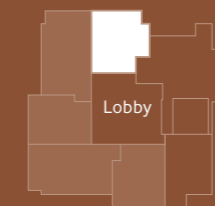
1
BED APARTMENT
D.01.02



ELEVATION

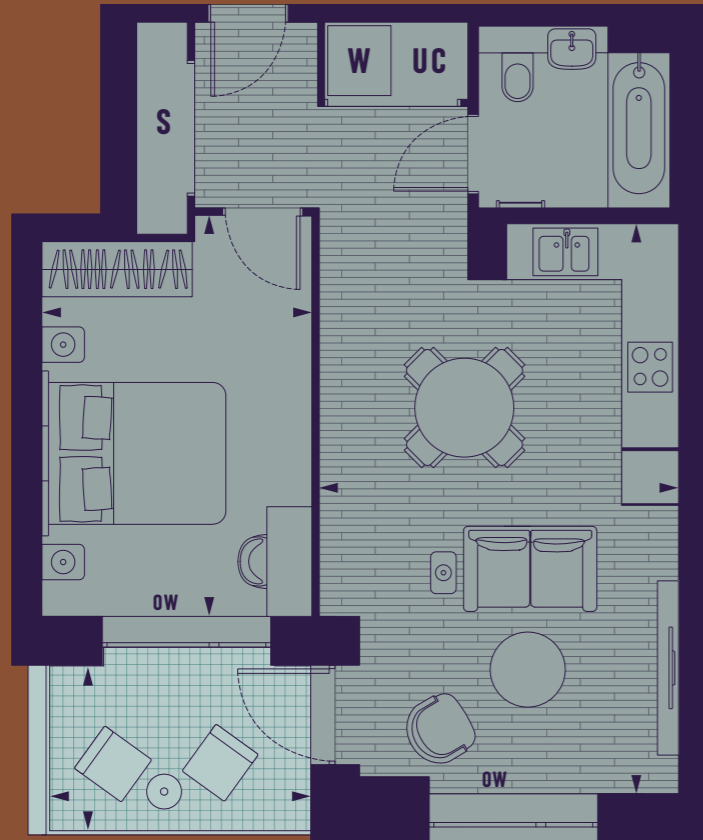


FLOOR PLATE



APARTMENT DIMENSIONS

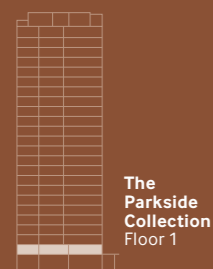
Living Room/Kitchen:	4.1m x 6.4m	13' 4" x 20' 11"
Principal Bedroom:	3.0m x 4.5m	10' x 14' 7"
Total Internal Area:	53.2 sq. m	573 sq. ft
Balcony:	2.8m x 1.8m	9'4" x 6'



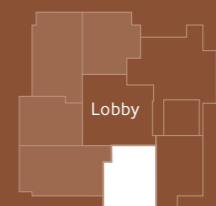
1
BED APARTMENT
D.01.03



ELEVATION

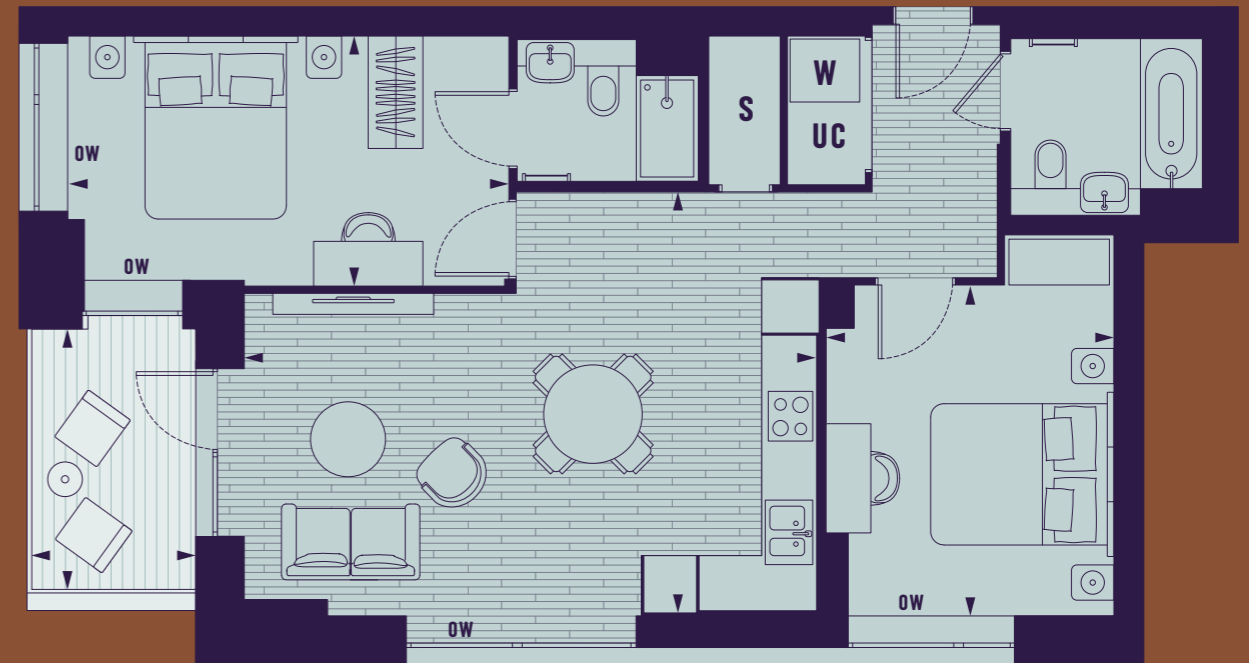


FLOOR PLATE



APARTMENT DIMENSIONS

Living Room/Kitchen:	4.1m x 6.4m	13' 4" x 20' 11"
Principal Bedroom:	3.0m x 4.5m	10' x 14' 7"
Total Internal Area:	53.6 sq. m	577 sq. ft
Terrace:	3.2m x 1.9m	10' 6" x 6' 1"



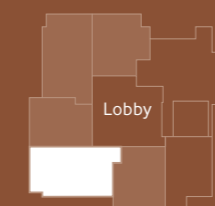
2
BED APARTMENT
D.01.04



ELEVATION



FLOOR PLATE



APARTMENT DIMENSIONS

Living Room/Kitchen:	4.8m x 6.5m	15' 10" x 21' 4"
Principal Bedroom:	2.8m x 5.0m	9' 3" x 16' 4"
Bedroom 2:	3.3m x 3.8m	10' 9" x 12' 4"
Total Internal Area:	75.9 sq. m	816 sq. ft
Balcony:	2.8m x 1.8m	9' 4" x 6'

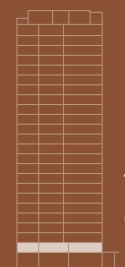
THE PARKSIDE COLLECTION



1
BED APARTMENT
D.01.05

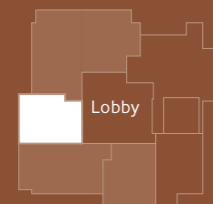


ELEVATION



The Parkside Collection
Floor 1

FLOOR PLATE



Lobby

APARTMENT DIMENSIONS

Living Room/Kitchen:	3.8m x 7.0m	12' 6" x 22' 11"
Principal Bedroom:	3.2m x 4.3m	10' 8" x 14' 1"
Total Internal Area:	53.4 sq. m	574 sq. ft
Balcony:	2.8m x 1.8m	9'4" x 6'



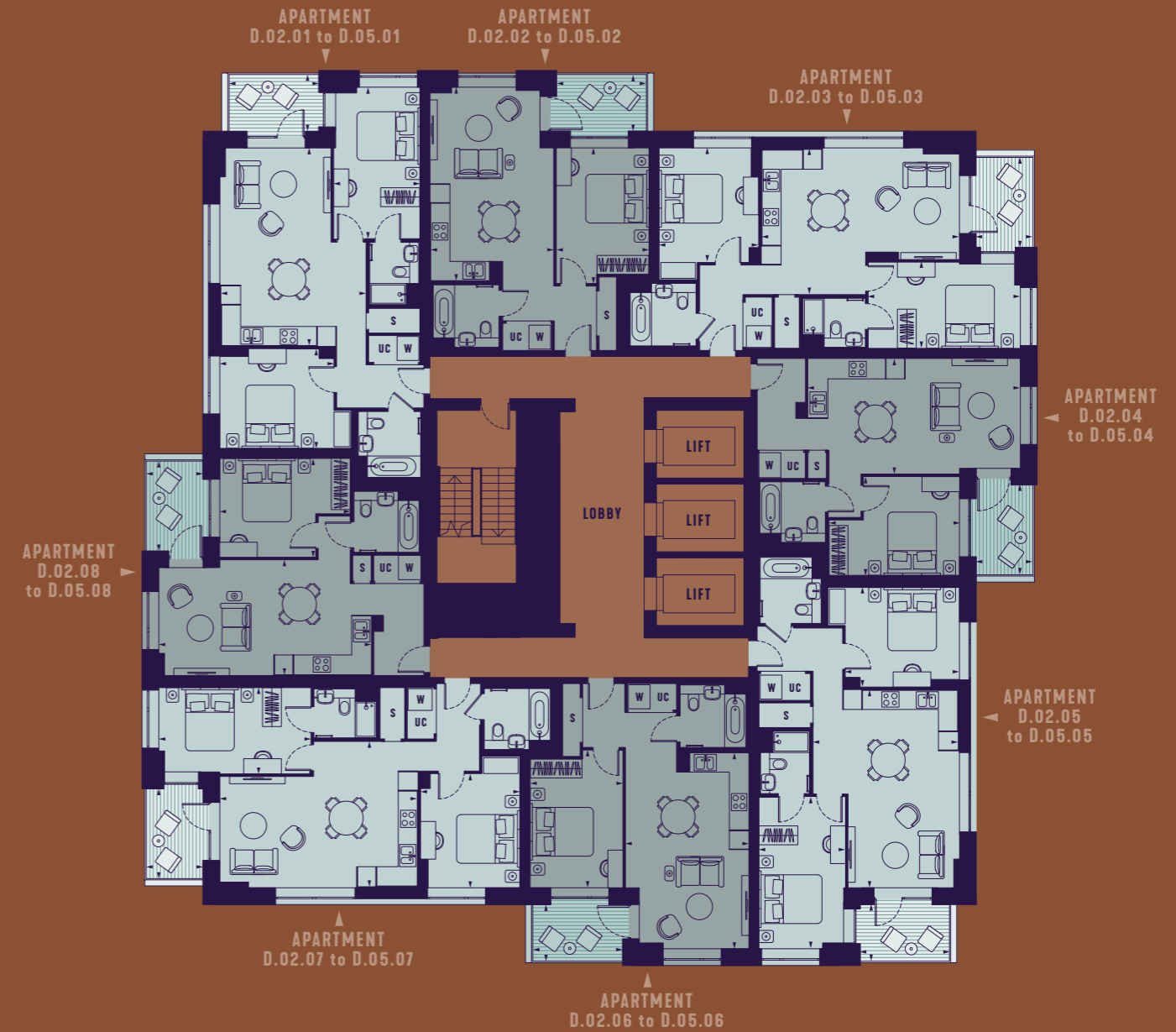
▲ A COMPUTER GENERATED IMAGE OF PARK & SAYER WITH ELEPHANT PARK, AND THE SHOPS AND RESTAURANTS OF SAYER STREET AT ITS BASE.



THE PARKSIDE COLLECTION

FLOORS 2 to 5

THE PARKSIDE COLLECTION

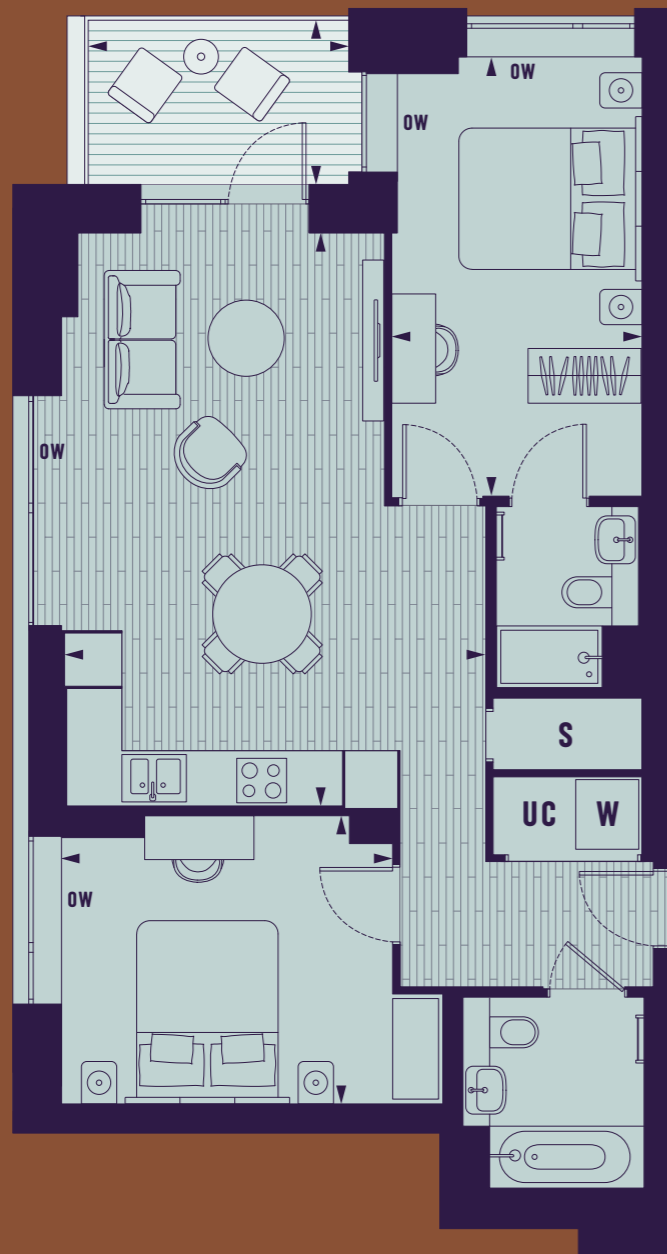


16
17



ELEVATION	ELEPHANT PARK	PARK & SAVER	NUMBER OF BEDROOMS
			<ul style="list-style-type: none"> 1 BEDROOM 2 BEDROOM STORAGE WASHING MACHINE UTILITIES

THE PARKSIDE COLLECTION



2
BED APARTMENT

D.02.01 to D.05.01



THE PARKSIDE COLLECTION

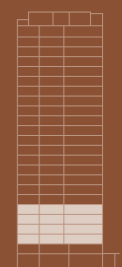


1
BED APARTMENT

D.02.02 to D.05.02

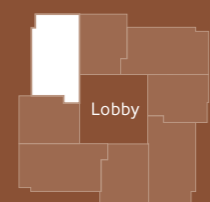


ELEVATION



The Parkside Collection
Floors 2-5

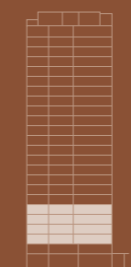
FLOOR PLATE



APARTMENT DIMENSIONS

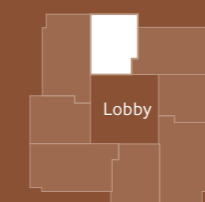
Living Room/Kitchen:	4.8m x 6.5m	15' 10" x 21' 4"
Principal Bedroom:	2.8m x 5.0m	9' 3" x 16' 4"
Bedroom 2:	3.3m x 3.8m	10' 9" x 12' 4"
Total Internal Area:	75.2 sq. m	809 sq. ft
Balcony:	2.8m x 1.8m	9'4" x 6'

ELEVATION



The Parkside Collection
Floors 2-5

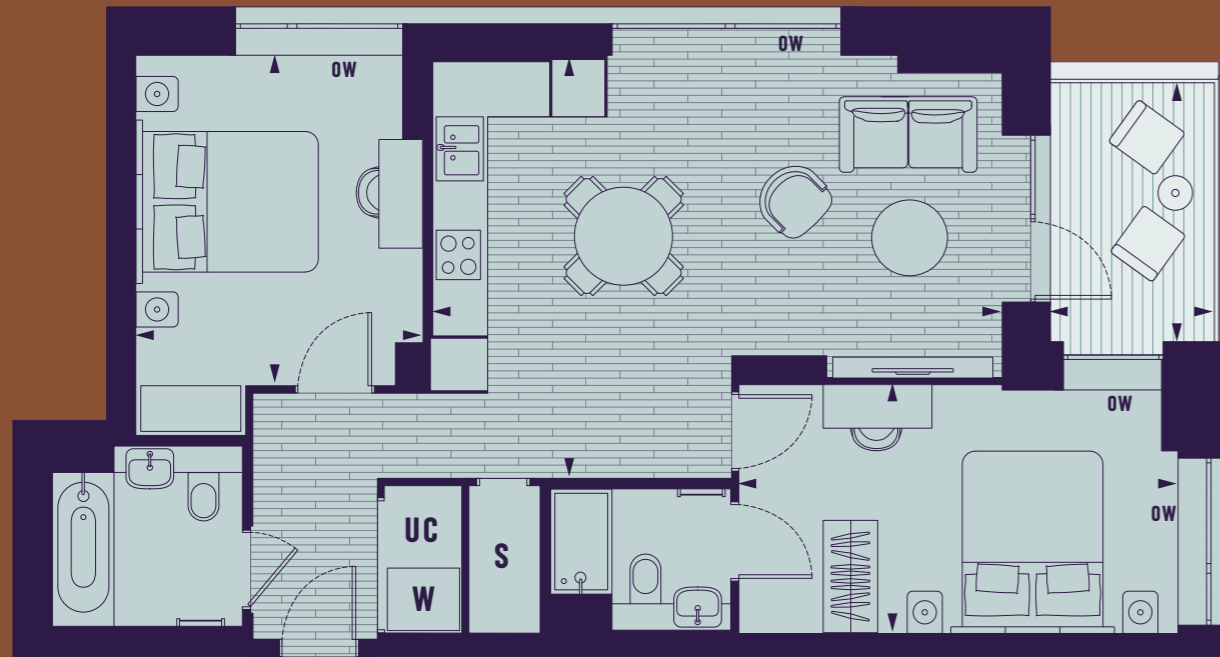
FLOOR PLATE



APARTMENT DIMENSIONS

Living Room/Kitchen:	4.1m x 6.4m	13' 4" x 20' 11"
Principal Bedroom:	3.0m x 4.5m	10' x 14' 7"
Total Internal Area:	53.2 sq. m	573 sq. ft
Balcony:	2.8m x 1.8m	9'4" x 6'

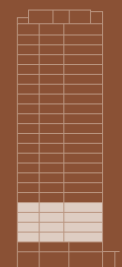
THE PARKSIDE COLLECTION



2
BED APARTMENT
D.02.03 to D.05.03

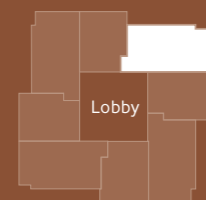


ELEVATION



The Parkside Collection
Floors 2-5

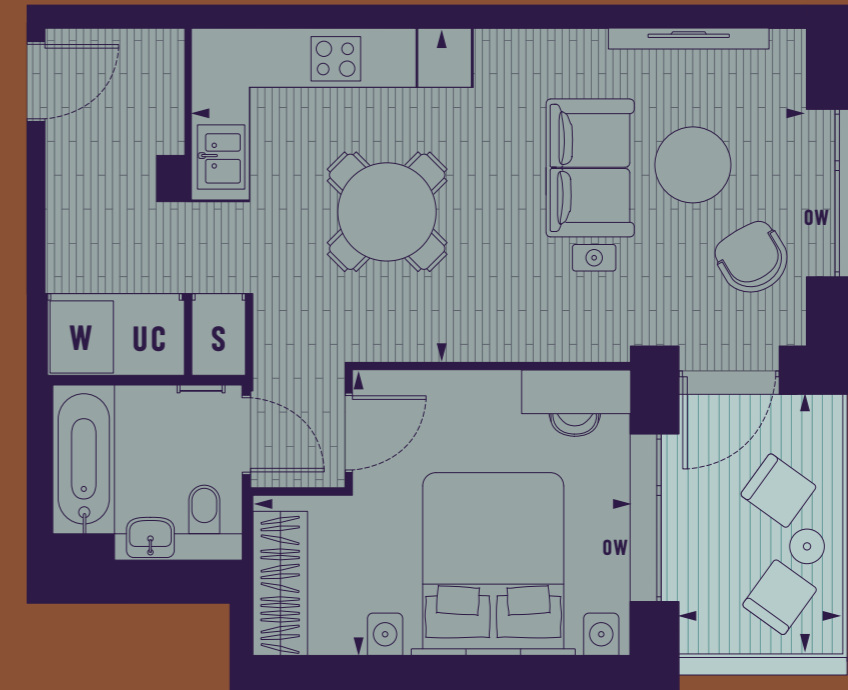
FLOOR PLATE



APARTMENT DIMENSIONS

Living Room/Kitchen:	4.8m x 6.5m	15' 10" x 21' 4"
Principal Bedroom:	2.8m x 5.0m	9' 3" x 16' 4"
Bedroom 2:	3.3m x 3.8m	10' 9" x 12' 4"
Total Internal Area:	75.6 sq. m	813 sq. ft
Balcony:	2.8m x 1.8m	9'4" x 6'

THE PARKSIDE COLLECTION



1
BED APARTMENT
D.02.04 to D.05.04

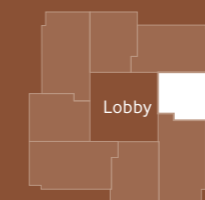


ELEVATION



The Parkside Collection
Floors 2-5

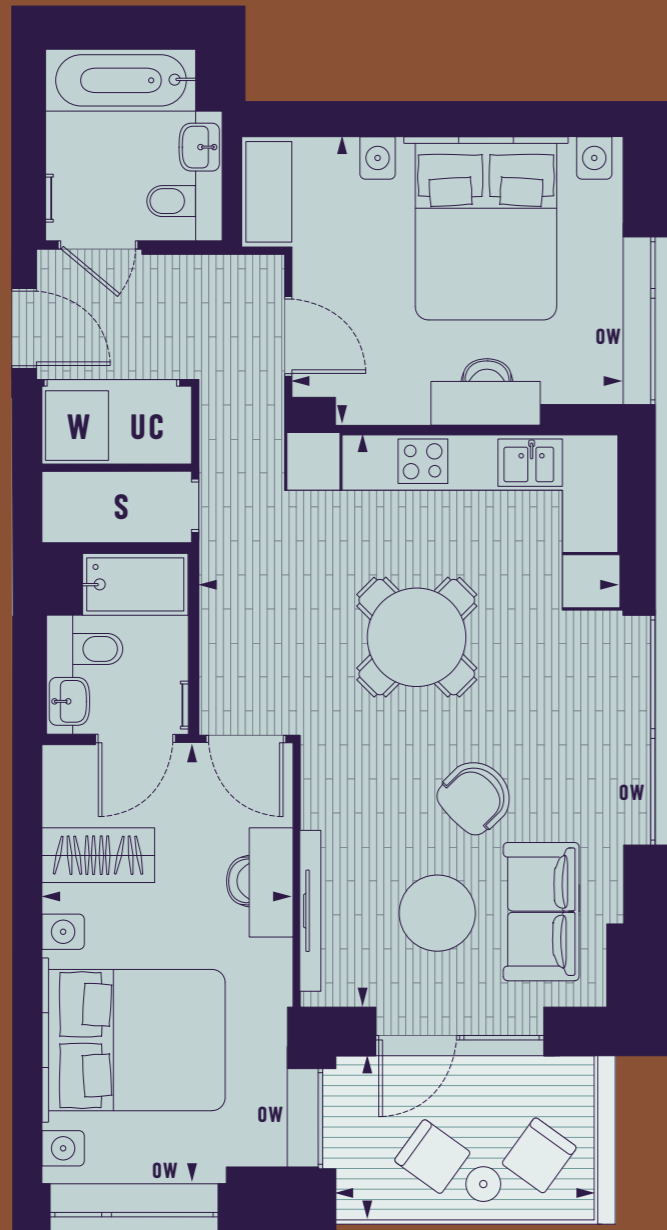
FLOOR PLATE



APARTMENT DIMENSIONS

Living Room/Kitchen:	3.8m x 7.0m	12' 6" x 22' 11"
Principal Bedroom:	3.2m x 4.3m	10' 8" x 14' 1"
Total Internal Area:	53.4 sq. m	575 sq. ft
Balcony:	2.8m x 1.8m	9'4" x 6'

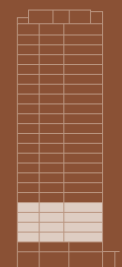
THE PARKSIDE COLLECTION



2
BED APARTMENT
D.02.05 to D.05.05

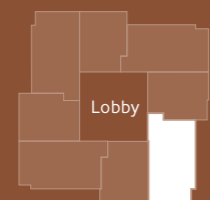


ELEVATION



The Parkside Collection
Floors 2-5

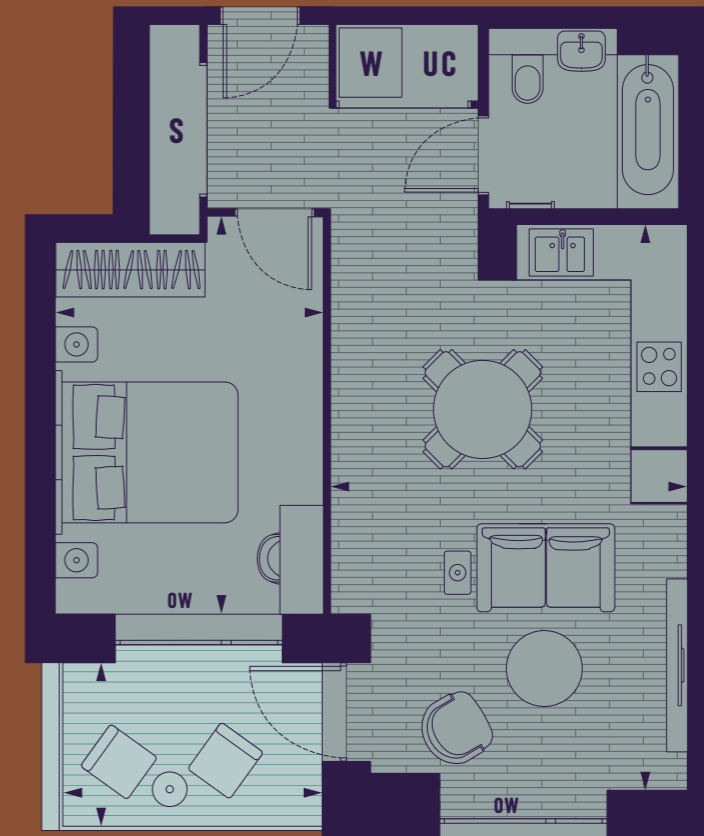
FLOOR PLATE



APARTMENT DIMENSIONS

Living Room/Kitchen:	4.8m x 6.5m	15' 10" x 21' 4"
Principal Bedroom:	2.8m x 5.0m	9' 3" x 16' 4"
Bedroom 2:	3.3m x 3.8m	10' 9" x 12' 4"
Total Internal Area:	75.2 sq. m	809 sq. ft
Balcony:	2.8m x 1.8m	9'4" x 6'

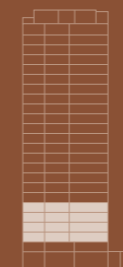
THE PARKSIDE COLLECTION



1
BED APARTMENT
D.02.06 to D.05.06

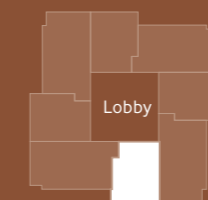


ELEVATION



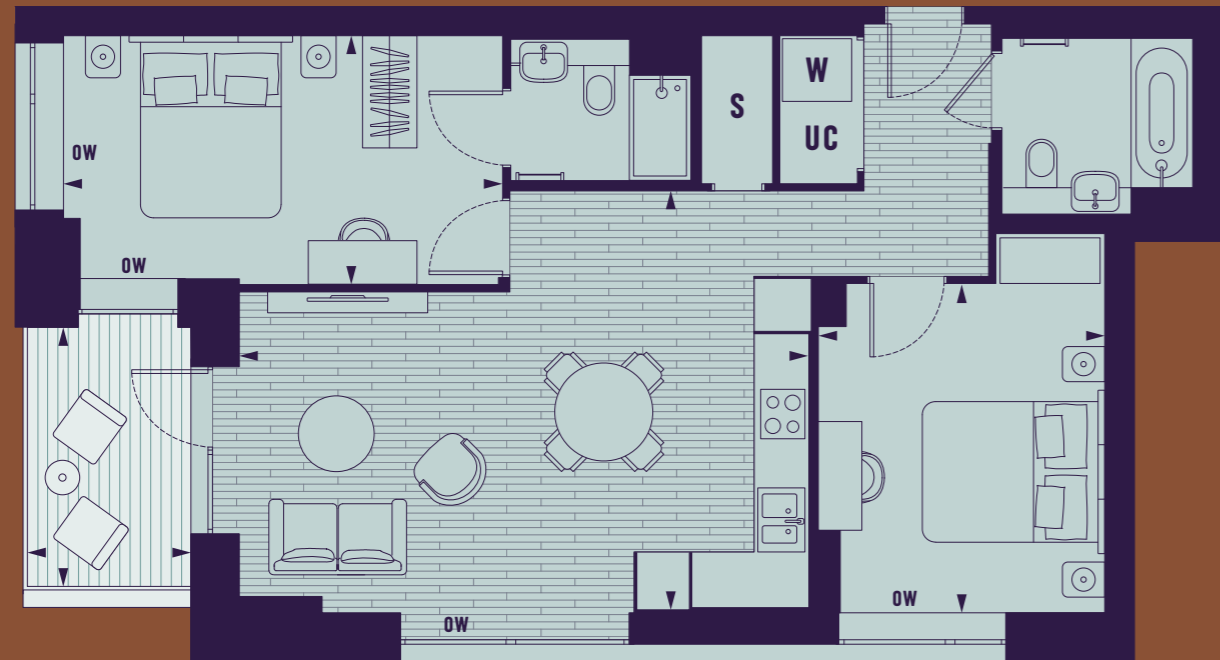
The Parkside Collection
Floors 2-5

FLOOR PLATE



APARTMENT DIMENSIONS

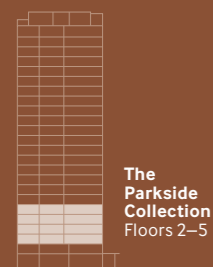
Living Room/Kitchen:	4.1m x 6.4m	13' 4" x 20' 11"
Principal Bedroom:	3.0m x 4.5m	10' x 14' 7"
Total Internal Area:	53.6 sq. m	577 sq. ft
Balcony:	2.8m x 1.8m	9'4" x 6'



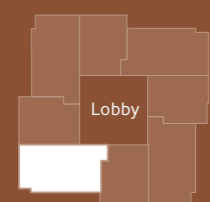
2
BED APARTMENT
D.02.07 to D.05.07



ELEVATION

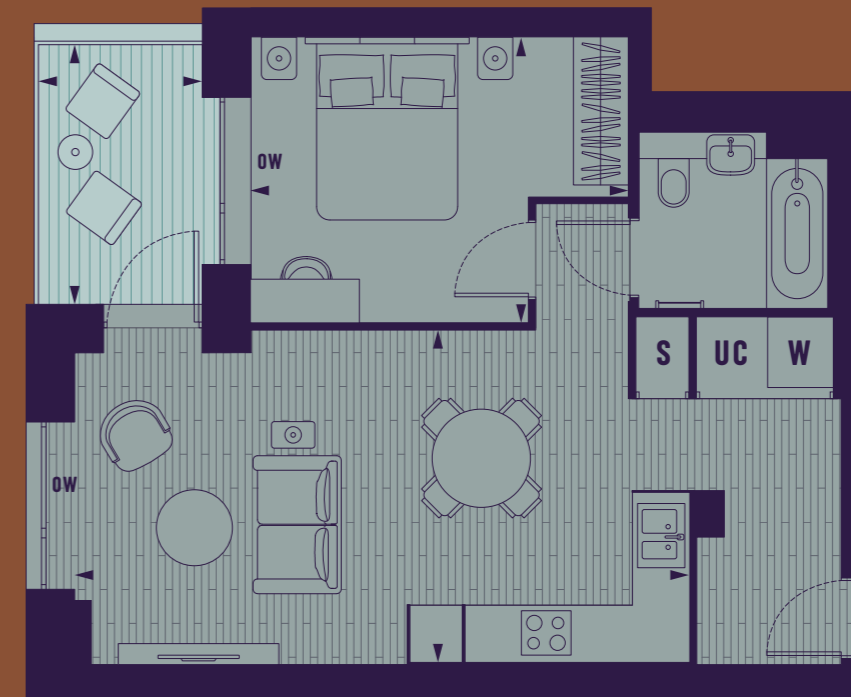


FLOOR PLATE



APARTMENT DIMENSIONS

Living Room/Kitchen:	4.8m x 6.5m	15' 10" x 21' 4"
Principal Bedroom:	2.8m x 5.0m	9' 3" x 16' 4"
Bedroom 2:	3.3m x 3.8m	10' 9" x 12' 4"
Total Internal Area:	75.9 sq. m	816 sq. ft
Balcony:	2.8m x 1.8m	9'4" x 6'



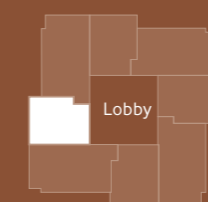
1
BED APARTMENT
D.02.08 to D.05.08



ELEVATION



FLOOR PLATE



APARTMENT DIMENSIONS

Living Room/Kitchen:	3.8m x 7.0m	12' 6" x 22' 11"
Principal Bedroom:	3.2m x 4.3m	10' 8" x 14' 1"
Total Internal Area:	53.4 sq. m	574 sq. ft
Balcony:	2.8m x 1.8m	9'4" x 6'

THE SKYLINE COLLECTION

FLOORS 6 to 14



THE SKYLINE COLLECTION



26
—
27



ELEVATION	ELEPHANT PARK	PARK & SAYER	NUMBER OF BEDROOMS
			<ul style="list-style-type: none"> 1 BEDROOM 2 BEDROOM STORAGE WASHING MACHINE UTILITIES

THE SKYLINE COLLECTION



2
BED APARTMENT
D.06.01 to D.14.01

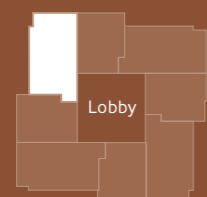


ELEVATION



The Skyline Collection
6 to 14

FLOOR PLATE



APARTMENT DIMENSIONS

Living Room/Kitchen:	4.8m x 6.5m	15' 10" x 21' 4"
Principal Bedroom:	2.8m x 5.0m	9' 3" x 16' 4"
Bedroom 2:	3.3m x 3.8m	10' 9" x 12' 4"
Total Internal Area:	75.2 sq. m	809 sq. ft
Balcony:	2.8m x 1.8m	9'4" x 6'

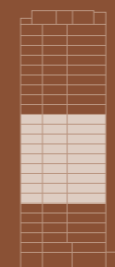
THE SKYLINE COLLECTION



1
BED APARTMENT
D.06.02 to D.14.02

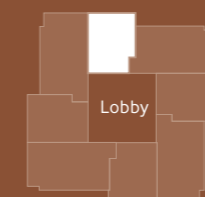


ELEVATION



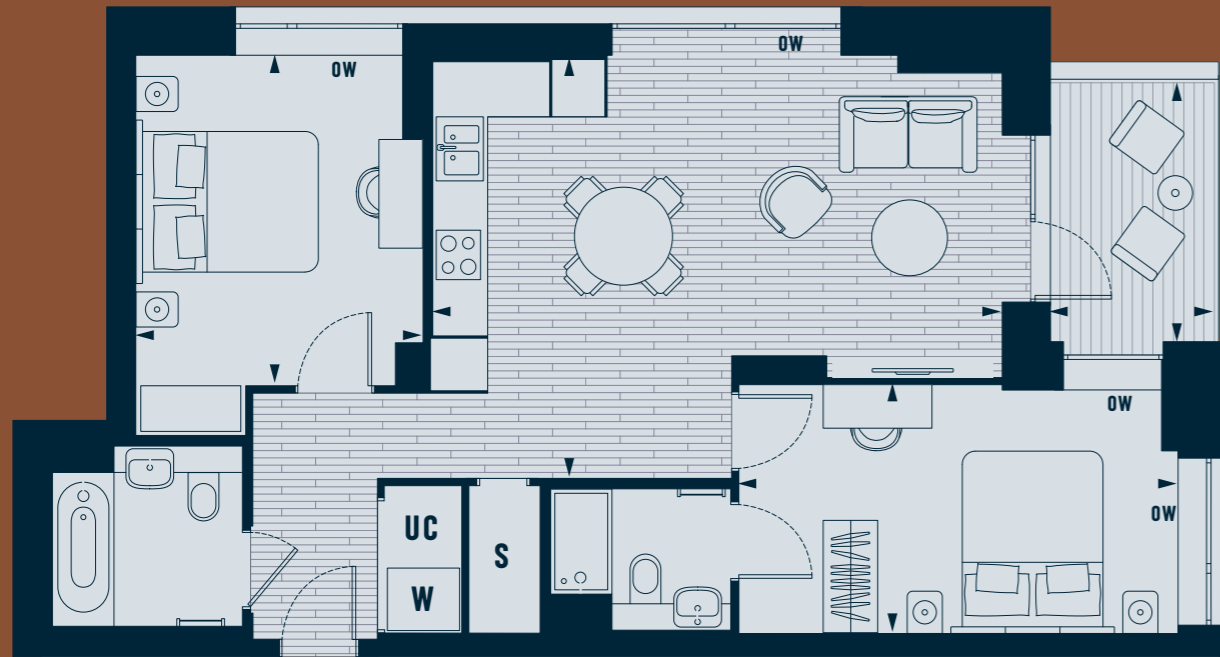
The Skyline Collection
6 to 14

FLOOR PLATE



APARTMENT DIMENSIONS

Living Room/Kitchen:	4.1m x 6.4m	13' 4" x 20' 11"
Principal Bedroom:	3.0m x 4.5m	10' x 14' 7"
Total Internal Area:	53.2 sq. m	573 sq. ft
Balcony:	2.8m x 1.8m	9'4" x 6'



2
BED APARTMENT

D.06.03 to D.14.03

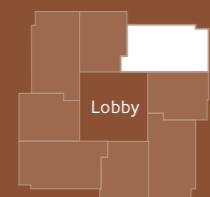


ELEVATION



The Skyline Collection
6 to 14

FLOOR PLATE



APARTMENT DIMENSIONS

Living Room/Kitchen:	4.8m x 6.5m	15' 10" x 21' 4"
Principal Bedroom:	2.8m x 5.0m	9' 3" x 16' 4"
Bedroom 2:	3.3m x 3.8m	10' 9" x 12' 4"
Total Internal Area:	75.6 sq. m	813 sq. ft
Balcony:	2.8m x 1.8m	9'4" x 6'

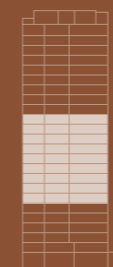


1
BED APARTMENT

D.06.04 to D.14.04

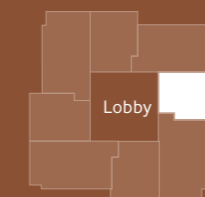


ELEVATION



The Skyline Collection
6 to 14

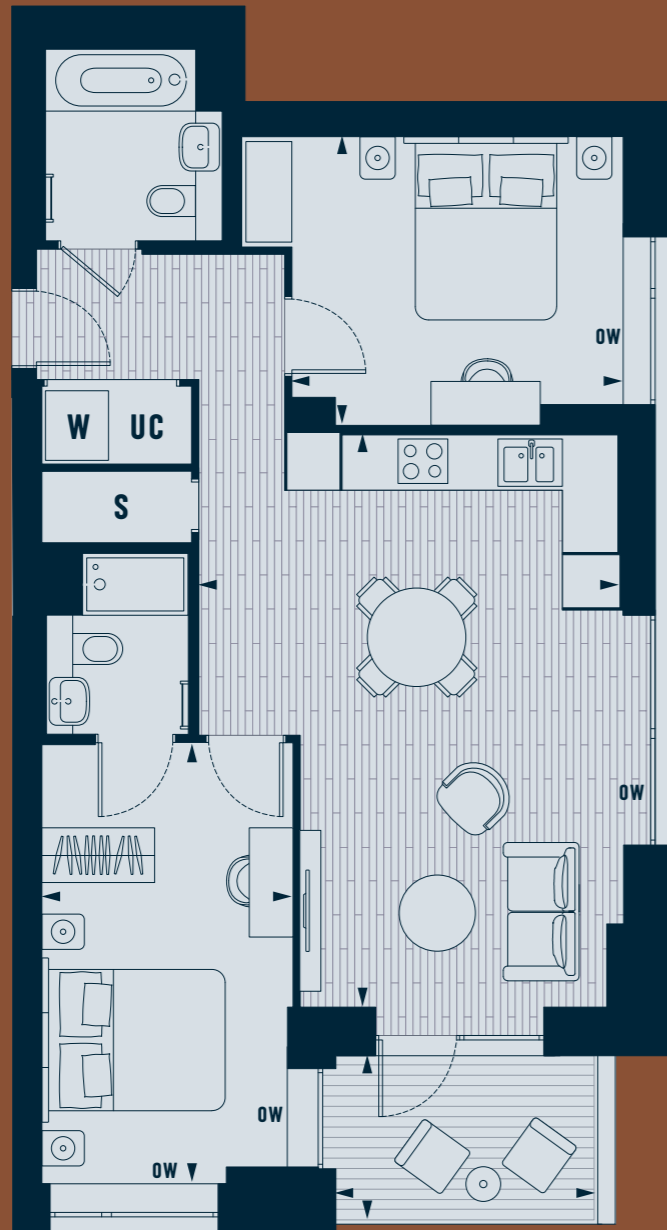
FLOOR PLATE



APARTMENT DIMENSIONS

Living Room/Kitchen:	3.8m x 7.0m	12' 6" x 22' 11"
Principal Bedroom:	3.2m x 4.3m	10' 8" x 14' 1"
Total Internal Area:	53.4 sq. m	575 sq. ft
Balcony:	2.8m x 1.8m	9'4" x 6'

THE SKYLINE COLLECTION



2
BED APARTMENT

D.06.05 to D.14.05

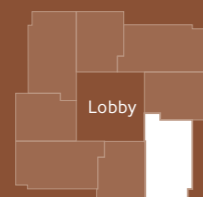


ELEVATION



The Skyline Collection
6 to 14

FLOOR PLATE



APARTMENT DIMENSIONS

Living Room/Kitchen:	4.8m x 6.5m	15' 10" x 21' 4"
Principal Bedroom:	2.8m x 5.0m	9' 3" x 16' 4"
Bedroom 2:	3.3m x 3.8m	10' 9" x 12' 4"
Total Internal Area:	75.2 sq. m	809 sq. ft
Balcony:	2.8m x 1.8m	9'4" x 6'

THE SKYLINE COLLECTION

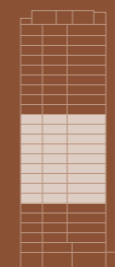


1
BED APARTMENT

D.06.06 to D.14.06

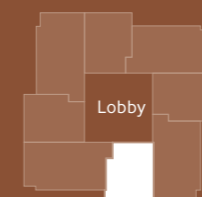


ELEVATION



The Skyline Collection
6 to 14

FLOOR PLATE



APARTMENT DIMENSIONS

Living Room/Kitchen:	4.1m x 6.4m	13' 4" x 20' 11"
Principal Bedroom:	3.0m x 4.5m	10' x 14' 7"
Total Internal Area:	53.6 sq. m	577 sq. ft
Balcony:	2.8m x 1.8m	9'4" x 6'

THE SKYLINE COLLECTION



2
BED APARTMENT

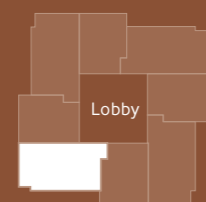
D.06.07 to D.14.07



ELEVATION



FLOOR PLATE



APARTMENT DIMENSIONS

Living Room/Kitchen:	4.8m x 6.5m	15' 10" x 21' 4"
Principal Bedroom:	2.8m x 5.0m	9' 3" x 16' 4"
Bedroom 2:	3.3m x 3.8m	10' 9" x 12' 4"
Total Internal Area:	75.9 sq. m	816 sq. ft
Balcony:	2.8m x 1.8m	9'4" x 6'

THE SKYLINE COLLECTION



1
BED APARTMENT

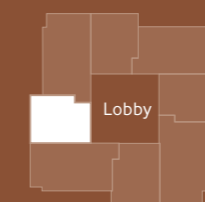
D.06.08 to D.14.08



ELEVATION

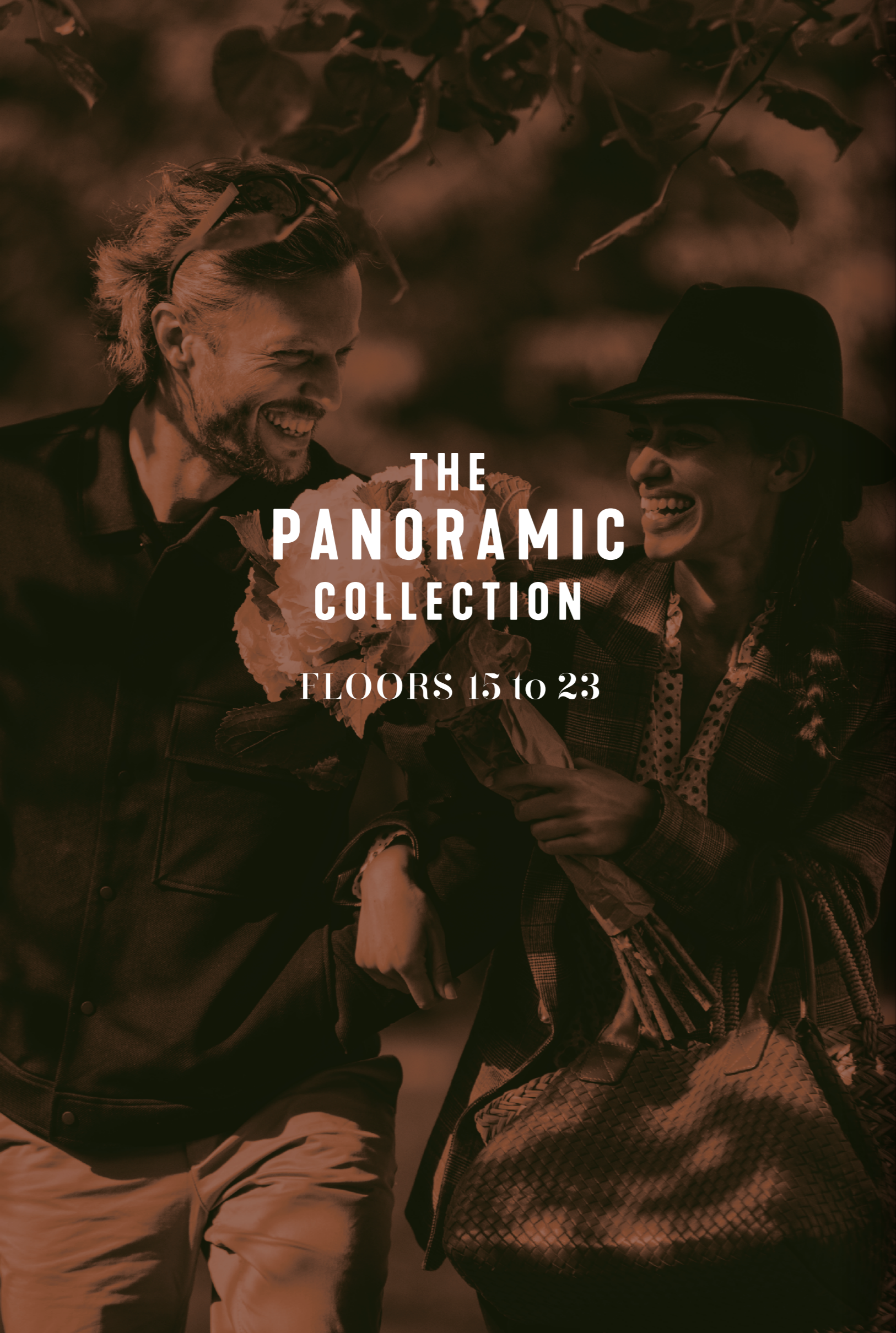


FLOOR PLATE



APARTMENT DIMENSIONS

Living Room/Kitchen:	3.8m x 7.0m	12' 6" x 22' 11"
Principal Bedroom:	3.2m x 4.3m	10' 8" x 14' 1"
Total Internal Area:	53.4 sq. m	574 sq. ft
Balcony:	2.8m x 1.8m	9'4" x 6'



THE PANORAMIC COLLECTION

FLOORS 15 to 23

THE PANORAMIC COLLECTION

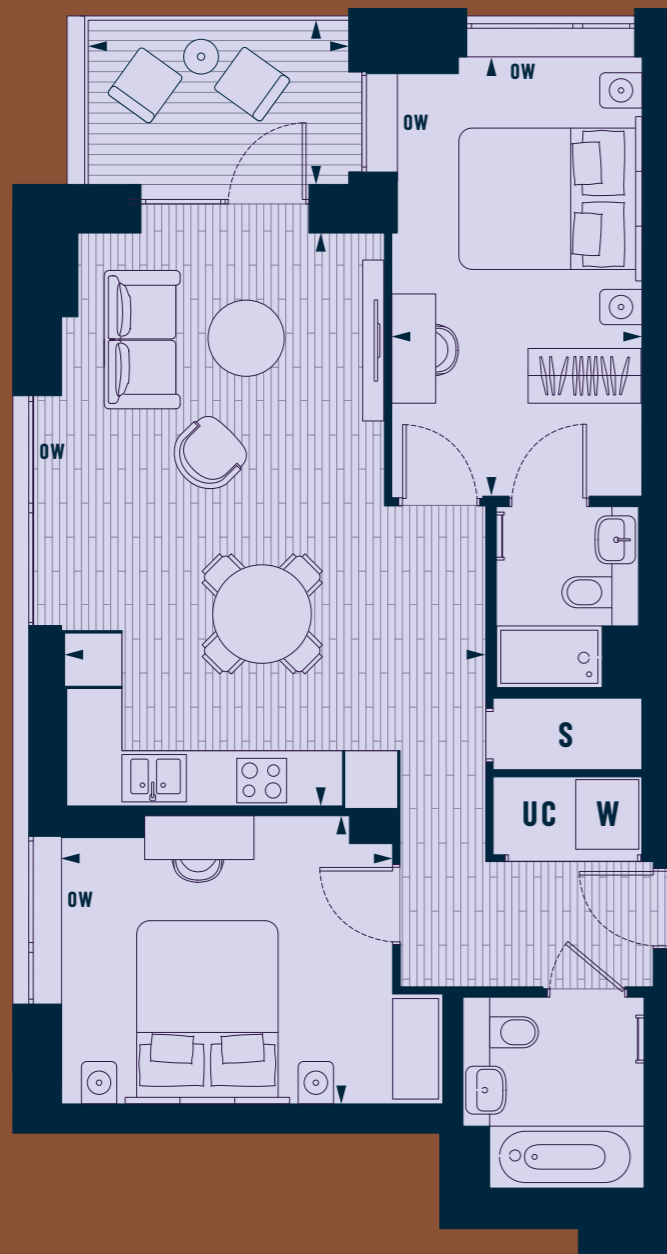


36
37



ELEVATION	ELEPHANT PARK	PARK & SAYER	NUMBER OF BEDROOMS
			<ul style="list-style-type: none"> 1 BEDROOM 2 BEDROOM STORAGE WASHING MACHINE UTILITIES

THE PANORAMIC COLLECTION



2
BED APARTMENT
D.15.01 to D.23.01

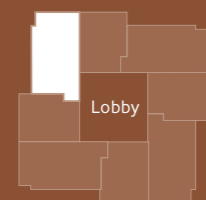


ELEVATION



The Panoramic Collection
15 to 23

FLOOR PLATE



APARTMENT DIMENSIONS

Living Room/Kitchen:	4.8m x 6.5m	15' 10" x 21' 4"
Principal Bedroom:	2.8m x 5.0m	9' 3" x 16' 4"
Bedroom 2:	3.3m x 3.8m	10' 9" x 12' 4"
Total Internal Area:	75.2 sq. m	809 sq. ft
Balcony:	2.8m x 1.8m	9'4" x 6'

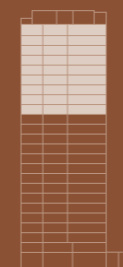
THE PANORAMIC COLLECTION



1
BED APARTMENT
D.15.02 to D.23.02

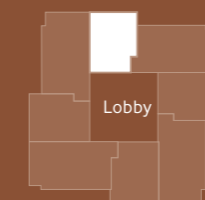


ELEVATION



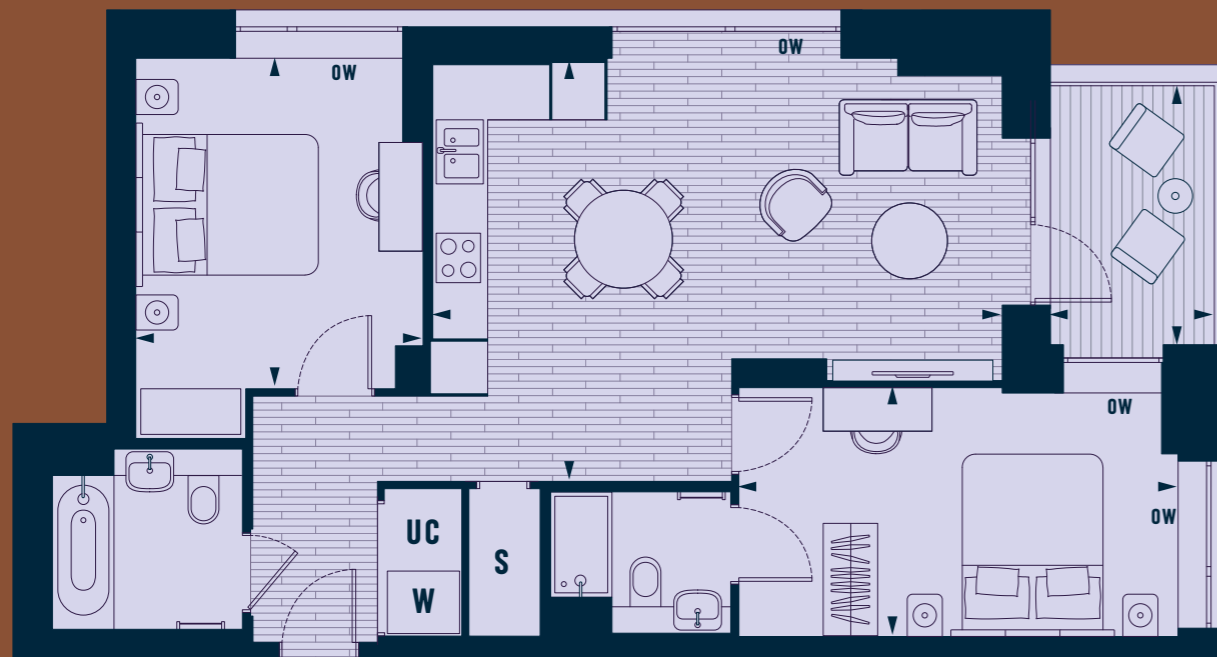
The Panoramic Collection
15 to 23

FLOOR PLATE



APARTMENT DIMENSIONS

Living Room/Kitchen:	4.1m x 6.4m	13' 4" x 20' 11"
Principal Bedroom:	3.0m x 4.5m	10' x 14' 7"
Total Internal Area:	53.2 sq. m	573 sq. ft
Balcony:	2.8m x 1.8m	9'4" x 6'

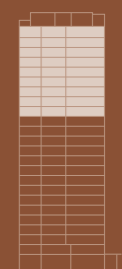


2
BED APARTMENT

D.15.03 to D.23.03

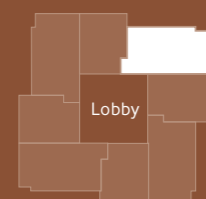


ELEVATION



The Panoramic Collection
15 to 23

FLOOR PLATE



APARTMENT DIMENSIONS

Living Room/Kitchen:	4.8m x 6.5m	15' 10" x 21' 4"
Principal Bedroom:	2.8m x 5.0m	9' 3" x 16' 4"
Bedroom 2:	3.3m x 3.8m	10' 9" x 12' 4"
Total Internal Area:	75.6 sq. m	813 sq. ft
Balcony:	2.8m x 1.8m	9'4" x 6'

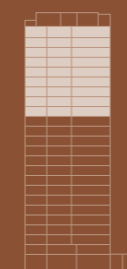


1
BED APARTMENT

D.15.04 to D.23.04

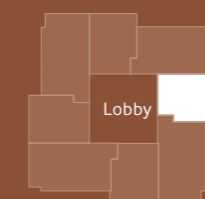


ELEVATION



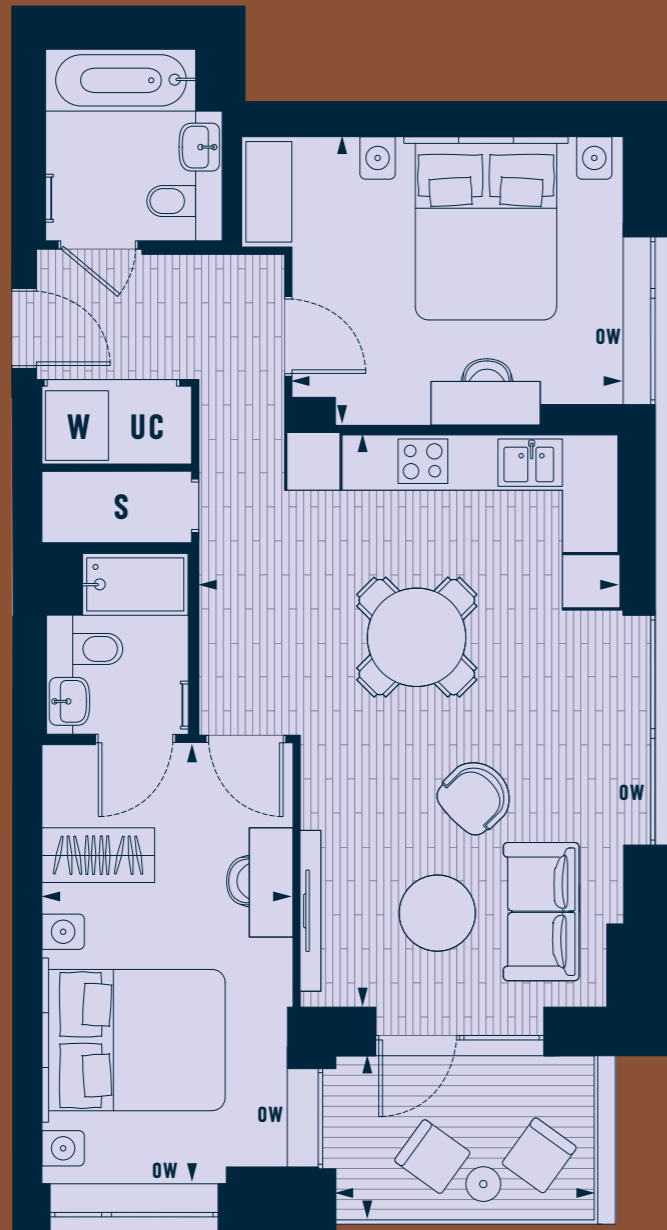
The Panoramic Collection
15 to 23

FLOOR PLATE



APARTMENT DIMENSIONS

Living Room/Kitchen:	3.8m x 7.0m	12' 6" x 22' 11"
Principal Bedroom:	3.2m x 4.3m	10' 8" x 14' 1"
Total Internal Area:	53.4 sq. m	575 sq. ft
Balcony:	2.8m x 1.8m	9'4" x 6'

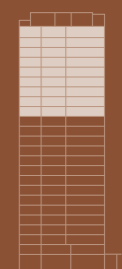


2
BED APARTMENT

D.15.05 to D.23.05

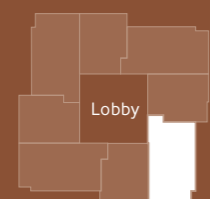


ELEVATION



The Panoramic Collection
15 to 23

FLOOR PLATE



Lobby

APARTMENT DIMENSIONS

Living Room/Kitchen:	4.8m x 6.5m	15' 10" x 21' 4"
Principal Bedroom:	2.8m x 5.0m	9' 3" x 16' 4"
Bedroom 2:	3.3m x 3.8m	10' 9" x 12' 4"
Total Internal Area:	75.2 sq. m	809 sq. ft
Balcony:	2.8m x 1.8m	9'4" x 6'

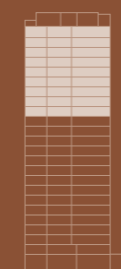


1
BED APARTMENT

D.15.06 to D.23.06

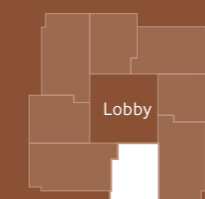


ELEVATION



The Panoramic Collection
15 to 23

FLOOR PLATE



Lobby

APARTMENT DIMENSIONS

Living Room/Kitchen:	4.1m x 6.4m	13' 4" x 20' 11"
Principal Bedroom:	3.0m x 4.5m	10' x 14' 7"
Total Internal Area:	53.6 sq. m	577 sq. ft
Balcony:	2.8m x 1.8m	9'4" x 6'

THE PANORAMIC COLLECTION

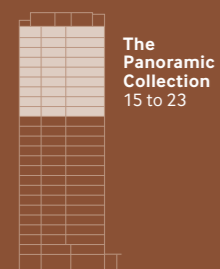


2
BED APARTMENT

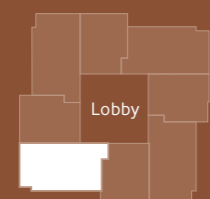
D.15.07 to D.23.07



ELEVATION



FLOOR PLATE



APARTMENT DIMENSIONS

Living Room/Kitchen:	4.8m x 6.5m	15' 10" x 21' 4"
Principal Bedroom:	2.8m x 5.0m	9' 3" x 16' 4"
Bedroom 2:	3.3m x 3.8m	10' 9" x 12' 4"
Total Internal Area:	75.9 sq. m	816 sq. ft
Balcony:	2.8m x 1.8m	9'4" x 6'

THE PANORAMIC COLLECTION

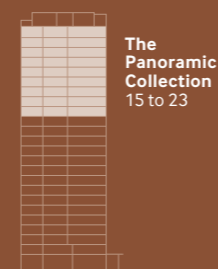


1
BED APARTMENT

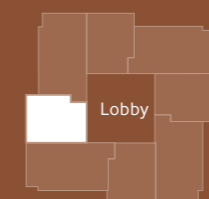
D.15.08 to D.23.08



ELEVATION



FLOOR PLATE

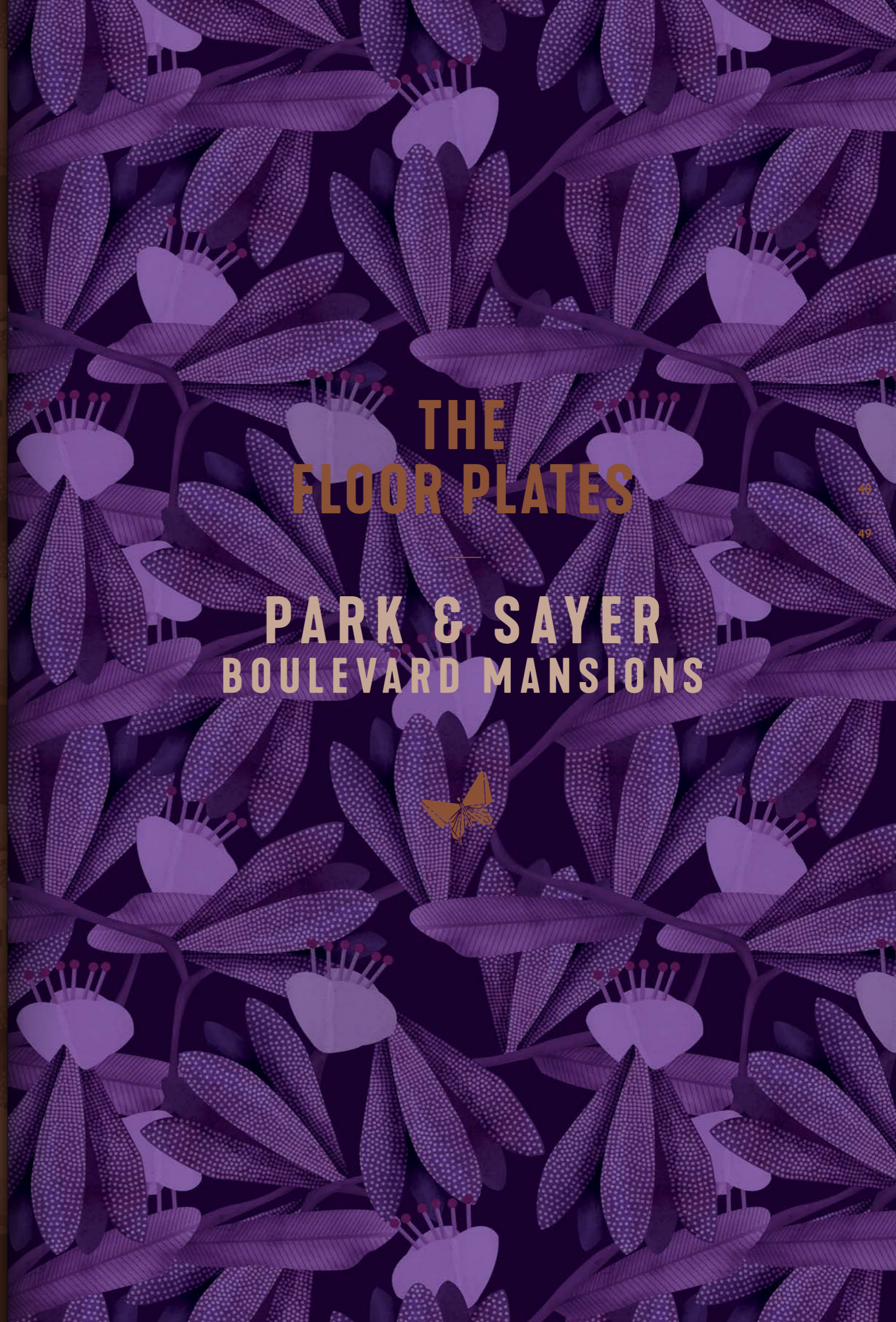


APARTMENT DIMENSIONS

Living Room/Kitchen:	3.8m x 7.0m	12' 6" x 22' 11"
Principal Bedroom:	3.2m x 4.3m	10' 8" x 14' 1"
Total Internal Area:	53.4 sq. m	574 sq. ft
Balcony:	2.8m x 1.8m	9'4" x 6'



▲ A COMPUTER GENERATED IMAGE OF PARK & SAYER ENTRANCE FROM THE PARK AND SAYER STREET ON THE RIGHT.

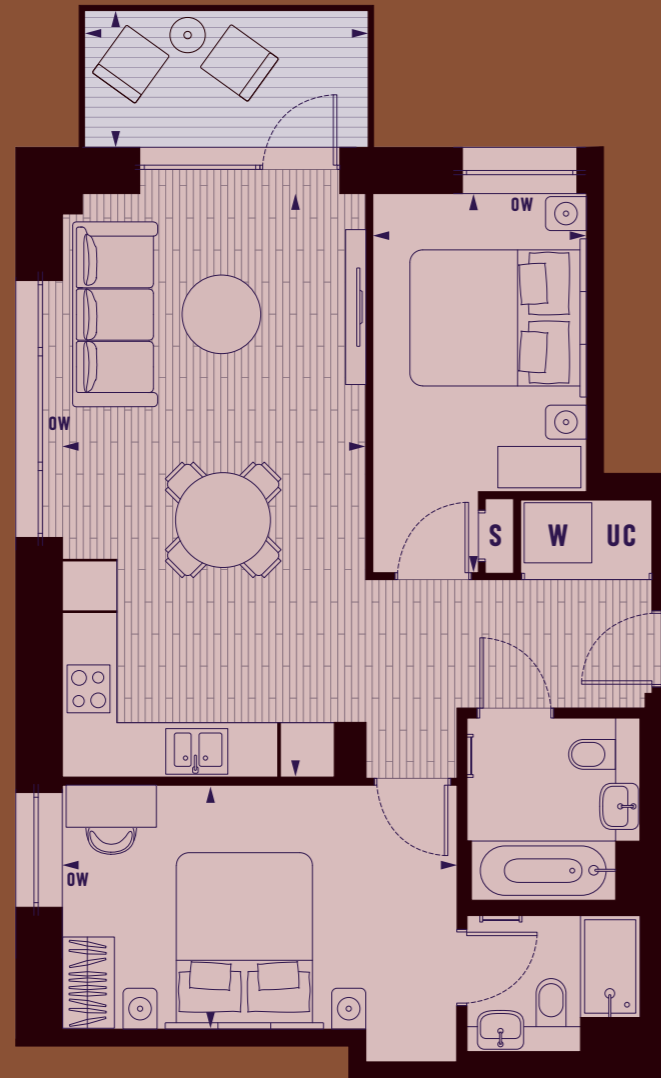


**THE
FLOOR PLATES**

**PARK & SAYER
BOULEVARD MANSIONS**



BOULEVARD MANSIONS



2
BED APARTMENT
C.03.01 to C.08.01

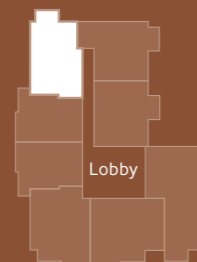


ELEVATION



Boulevard
Mansions
Floors 3 to 8

FLOOR PLATE



Lobby

APARTMENT DIMENSIONS

Living Room/Kitchen:	3.6m x 6.9m	11' 9" x 22' 9"
Principal Bedroom:	2.9m x 4.7m	9' 6" x 15' 4"
Bedroom 2:	2.5m x 4.5m	8' 3" x 14' 9"
Total Internal Area:	69.1 sq. m	743 sq. ft
Balcony:	3.3m x 1.6m	11' x 4' 4"

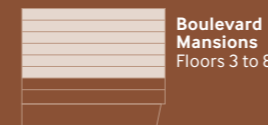
BOULEVARD MANSIONS



2
BED APARTMENT
C.03.02 to C.08.02

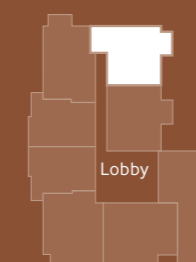


ELEVATION



Boulevard
Mansions
Floors 3 to 8

FLOOR PLATE



Lobby

APARTMENT DIMENSIONS

Living Room/Kitchen:	4.2m x 6.2m	13' 8" x 20' 3"
Principal Bedroom:	3.6m x 4.8m	11' 11" x 15' 9"
Bedroom 2:	2.4m x 3.3m	7' 11" x 10' 10"
Total Internal Area:	66.1 sq. m	711 sq. ft
Balcony	3.3m x 1.6m	11' x 4' 4"

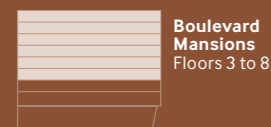
BOULEVARD MANSIONS



2
BED APARTMENT
C.03.03 to C.08.03

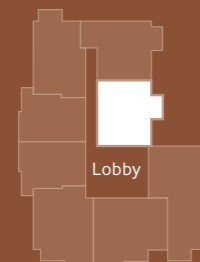


ELEVATION



Boulevard
Mansions
Floors 3 to 8

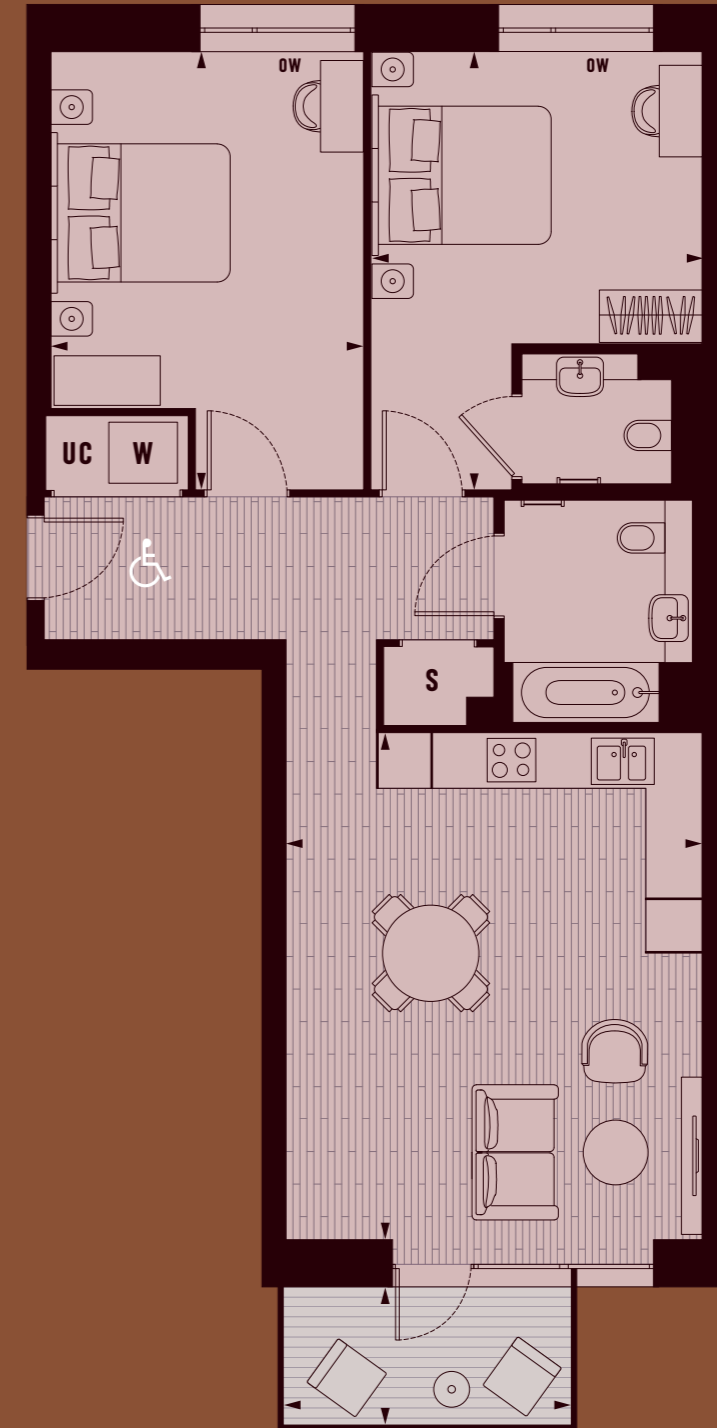
FLOOR PLATE



Lobby

APARTMENT DIMENSIONS

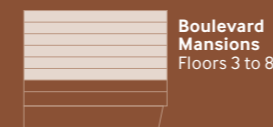
Living Room/Kitchen:	3.6m x 7.0m	11' 10" x 23' 1"
Principal Bedroom:	2.8m x 4.8m	9' 2" x 15' 11"
Bedroom 2:	2.5m x 3.7m	8' 2" x 12' 2"
Total Internal Area:	65.4 sq. m	704 sq. ft
Balcony:	3.3m x 1.6m	11' x 4' 4"



2
BED APARTMENT (WCH)
C.03.04 to C.08.04

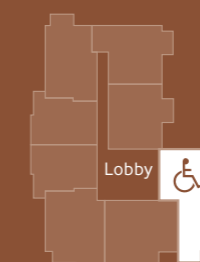


ELEVATION



Boulevard
Mansions
Floors 3 to 8

FLOOR PLATE

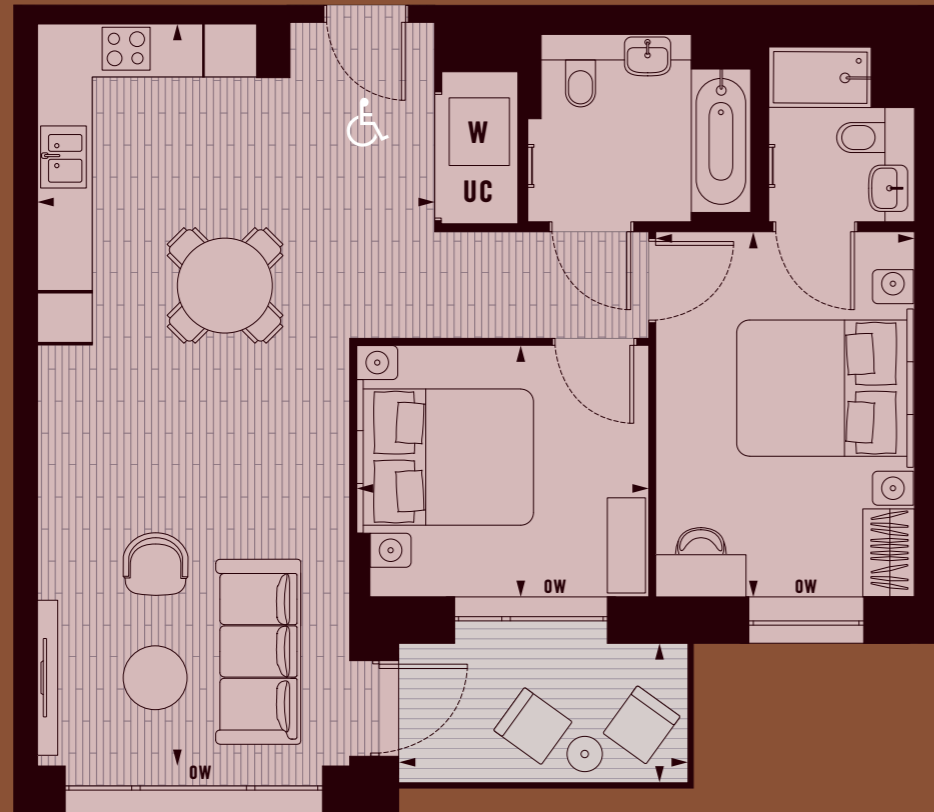


Lobby

APARTMENT DIMENSIONS

Living Room/Kitchen:	4.9m x 5.9m	15' 11" x 19' 5"
Principal Bedroom:	3.9m x 5.1m	12' 8" x 16' 10"
Bedroom 2:	3.7m x 5.1m	11' 11" x 16' 10"
Total Internal Area:	87.9 sq. m	946 sq. ft
Balcony:	3.3m x 1.6m	11' x 4' 4"

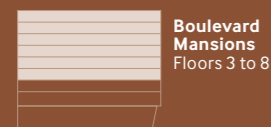
BOULEVARD MANSIONS



2
BED APARTMENT (WCH)
C.03.05 to C.08.05

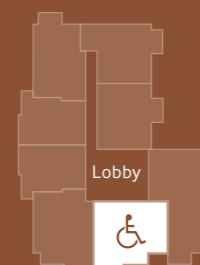


ELEVATION



Boulevard Mansions
Floors 3 to 8

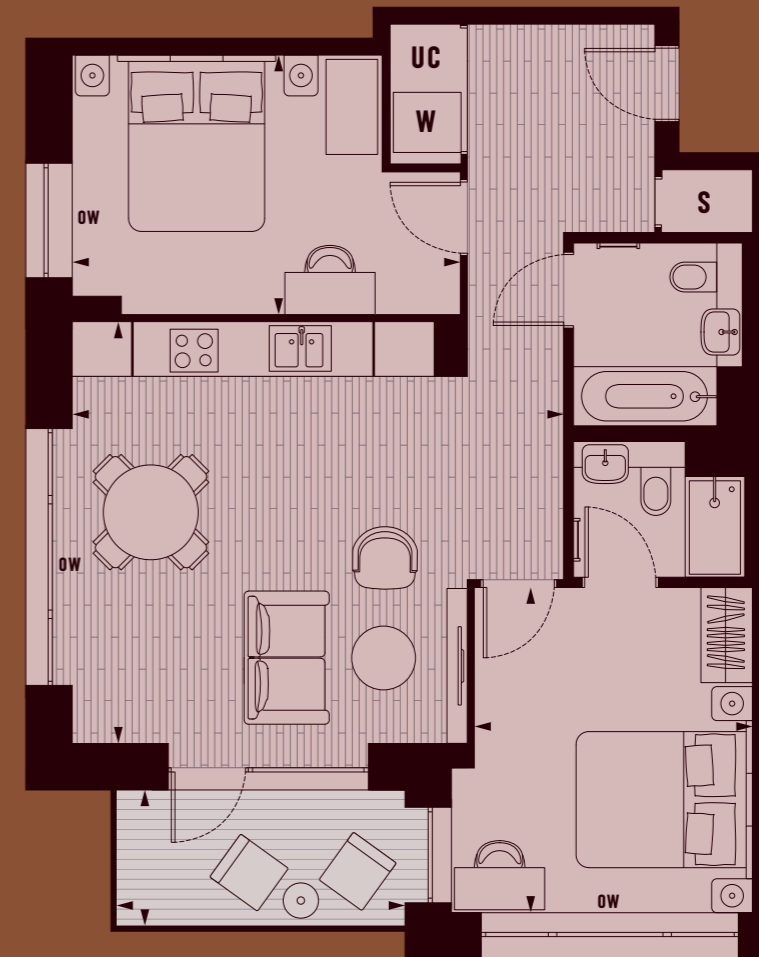
FLOOR PLATE



APARTMENT DIMENSIONS

Living Room/Kitchen:	4.7m x 8.8m	15' 5" x 28' 11"
Principal Bedroom:	3.0m x 4.3m	10' 1" x 14' 2"
Bedroom 2:	3.0m x 3.5m	9' 9" x 11' 4"
Total Internal Area:	78.5 sq. m	845 sq. ft
Balcony:	3.4m x 1.6m	11' 2" x 4' 4"

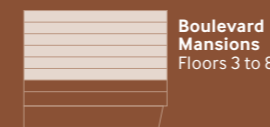
BOULEVARD MANSIONS



2
BED APARTMENT
C.03.06 to C.08.06

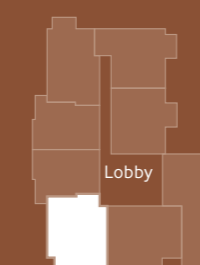


ELEVATION



Boulevard Mansions
Floors 3 to 8

FLOOR PLATE



APARTMENT DIMENSIONS

Living Room/Kitchen:	5.0m x 5.8m	16' 5" x 19'
Principal Bedroom:	3.3m x 3.9m	10' 10" x 12' 8"
Bedroom 2:	3.1m x 4.6m	10' 1" x 15' 1"
Total Internal Area:	74.4 sq. m	801 sq. ft
Balcony:	3.4m x 1.6m	11' 2" x 4' 4"

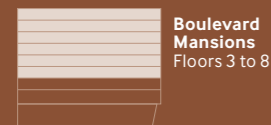
BOULEVARD MANSIONS



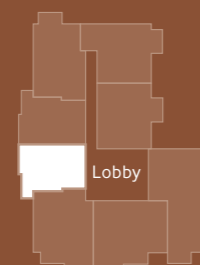
1
BED APARTMENT
C.03.07 to C.08.07



ELEVATION



FLOOR PLATE



APARTMENT DIMENSIONS

Living Room/Kitchen:	3.6m x 6.8m	11' 11" x 22' 5"
Principal Bedroom:	2.8m x 4.7m	9' 4" x 15' 6"
Total Internal Area:	52.8 sq. m	569 sq. ft
Balcony:	3.4m x 1.6m	11' 2" x 4' 4"

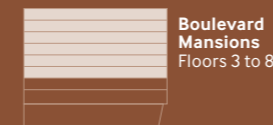
BOULEVARD MANSIONS



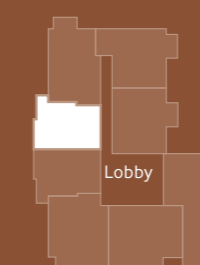
1
BED APARTMENT
C.03.08 to C.08.08



ELEVATION



FLOOR PLATE



APARTMENT DIMENSIONS

Living Room/Kitchen:	3.6m x 6.8m	11' 11" x 22' 5"
Principal Bedroom:	2.9m x 4.8m	9' 5" x 15' 6"
Total Internal Area:	53.1 sq. m	571 sq. ft
Balcony:	3.4m x 1.6m	11' 2" x 4' 4"



▲ A COMPUTER GENERATED IMAGE OF PARK & SAYER THROUGH THE TREES OF ELEPHANT PARK.

**FOR FURTHER INFORMATION
PLEASE GET IN TOUCH**



**MEET THE
PARK & SAYER TEAM**

Marcus Haynes
Sales & Marketing Director

Aneta Krawczyk
Sales Manager

Michelle Lemmon
Senior International
Sales Consultant

Register your interest at

www.parkandsayer.co.uk

welcomehome@lendlease.com

+44 (0) 20 4502 7090

Visit the marketing suite

6 Deacon Street
London
SE17 1GD

lendlease

DISCLAIMER: This document was produced November 2020 as a general outline only, for the guidance of prospective purchasers. It does not constitute an offer or invitation and no information, illustrations, images or figures (together 'materials') set out herein shall form the basis of any contract. The materials contained in this document (which does not purport to be comprehensive) are illustrative and/or indicative only and are subject to change and are not to be relied upon as statements of fact. This includes without limitation any description, dimensions, layouts, plans, square footage, distances, maps, design detail, individual features, pictures, computer generated images, colours, services, amenities, fixtures and fittings, layouts or landscaping. Any plans and layouts included are not to scale. No representation or warranty (express or implied) is made, and all liability in relation to this document is excluded to the fullest extent permitted by law by Lendlease and the Lendlease group of companies. The information contained in this document should not be relied upon as accurately describing any of the specific matters under the Consumer Protection from Unfair Trading Regulations 2008 and the Business Protection from Unfair Trading Regulations 2008.

